

Sinfonia n° 41

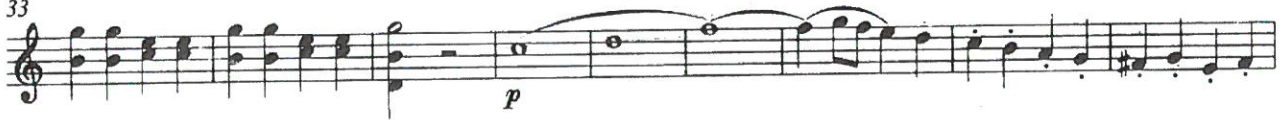
1° Andamento e Finale

Mozart, W.

Musical score for the first movement of Mozart's Symphony No. 41, measures 123-147. The score is written in treble clef with a key signature of two flats (B-flat and E-flat). The tempo is marked 'Andamento'. The music features a melodic line with various dynamics: *p* (piano) at measure 123, *f* (forte) at measure 128, and *p* (piano) at measure 147. The melody is characterized by eighth-note patterns and rests. A first ending bracket is present at measure 128.

Musical score for the finale of Mozart's Symphony No. 41, measures 1-27. The tempo is marked 'Molto Allegro'. The score is written in treble clef with a key signature of two flats (B-flat and E-flat). The music features a rhythmic pattern of eighth notes, often beamed together. Dynamics include *p* (piano) at measure 1 and *f* (forte) at measure 6. The score is divided into measures 1, 6, 14, 21, and 27.

33



42



50



61



69



74



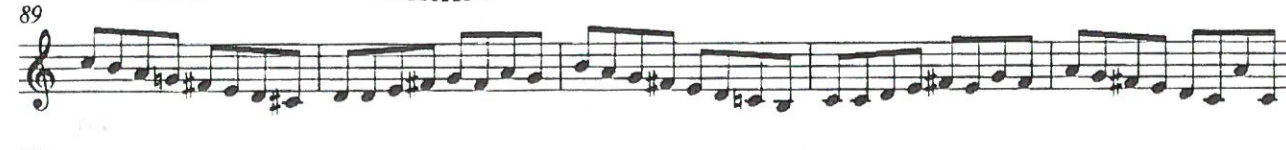
79



84



89



94



100



109



114

